

EFFECTIVENESS OF NEURAMINIDASE INHIBITORS IN REDUCING MORTALITY IN HOSPITALISED INFLUENZA A(H1N1)pdm09 PATIENTS: AN INDIVIDUAL PATIENT DATA META-ANALYSIS

Supplementary information

Supplementary Appendix 1: PRIDE study Investigators

Study no†	Authors	Author Affiliation
1	YS Leo, WM Kyaw	Department of Infectious Diseases, Tan Tock Seng Hospital, Singapore
2	A Al Mamun ¹ , M Rahman ² , E Azziz-Baumgartner ³	¹ International Centre for Diarrhoeal Diseases Research Bangladesh (ICDDR), Dhaka, Bangladesh ² Institute of Epidemiology, Disease Control and Research (IEDCR), Dhaka, Bangladesh ³ Centers for Disease Control and Prevention, Atlanta, Georgia, USA
3	A Moradi ^{1,2} , P Tabarsi ²	¹ The Division of Ocular Immunology, Department of Ophthalmology, Johns Hopkins University School of Medicine, Baltimore, Maryland, United States ² National Research Institute for Tuberculosis and Lung Disease, Masih Daneshvari Hospital, Shahid Beheshti University of Medical Sciences, Tehran, Iran
4	A H Rodríguez* for the H1N1 Sociedad Española de Medicina Intensiva, Crítica y Unidades Coronarias (SEMICYUC) working group	*Hospital Joan XXIII, Critical Care Department - IISPV - URV - CIBERES, Tarragona, Spain
5	E Bautista ¹ , AL Higuera Iglesias ²	¹ Critical Care Department, Instituto Nacional de Enfermedades Respiratorias, Ismael Cosío Villegas, Mexico City, Mexico ² Epidemiology Research Unit, Instituto Nacional de Enfermedades Respiratorias, Ismael Cosío Villegas, Mexico City, Mexico
6	AC Seale ^{1,2} , J Fraser ¹	¹ Paediatric Intensive Care Unit, Bristol Children's Hospital, UK ² Bristol Children's Vaccine Centre, School of Clinical Sciences, University of Bristol, Bristol, UK
7	A van Zwol	Department of Pediatric Intensive Care, VU University Medical Center, Amsterdam, Netherlands
8	KKC Chan, AMC Kwan	Department of Intensive Care, Pamela Youde Nethersole Eastern Hospital, Chai Wan, Hong Kong
9	A Mickiene, D Velyvyte	Lithuanian University of Health Sciences, Kaunas, Lithuania
10	B Bertisch, M Hoffmann	Division of Infectious Diseases and Hospital Epidemiology, Kantonsspital St. Gallen, Switzerland

Study no†	Authors	Author Affiliation
11	B A Rath ¹ , B Schweiger ²	¹ Department of Pediatrics, Division of Pneumonology-Immunology, Charité University Medical Center, Berlin, Germany ² National Reference Centre Influenza at Robert Koch Institute, Berlin, Germany
12	B Cao, X Li	Beijing Chao-Yang Hospital, Capital Medical University, Beijing, China
13	B Du, X Hu	Peking Union Medical College Hospital, Beijing, China
14	B Sertogullarindan, B Ozbay	Yuzuncu Yil University Medical Faculty, Department of Pulmonary Medicine Van, Turkey
15	C Bantar, ME Oliva	Dept. of Infection Control, Hospital San Martín de Paraná, Entre Ríos, Argentina
16	A Torres, C Cilloniz	Hospital Clinic, University of Barcelona IDIBAPS, CIBERES, Spain
17	S Dashti-Khavidaki, H Khalili	Department of Clinical Pharmacy, Faculty of Pharmacy, Tehran University of Medical Sciences, Tehran, Iran
18	D Tran	Division of Infectious Diseases, Department of Paediatrics, The Hospital for Sick Children University of Toronto, Canada
19	E Langenegger	Department of Obstetrics and Gynaecology, Stellenbosch University and Tygerberg, South Africa
20	EB Sarrouf ¹ , MR Cuezco ¹ , E Azziz-Baumgartner ²	¹ Ministerio de Salud de Tucumán, Argentina ² Centers for Disease Control and Prevention, Atlanta, Georgia, USA
21	E Talarek, M Marczynska	Department of Children`s Infectious Diseases, Medical University of Warsaw, Poland
22	F Madanat	King Hussein Cancer Center, Department of Pediatrics, Amman , Jordan
23	G Dubnov-Raz	The Edmond and Lily Safra Children's Hospital, Sheba Medical Center, Israel
24	G Keijzers, J Gerrard, D Macbeth	Gold Coast Hospital, Gold Coast, Australia
25	G Metan, I Bozkurt	Department of Infectious diseases and clinical microbiology, Erciyes University Faculty of Medicine, Kayseri, Turkey
26	I Lahlou Amine, H El Rhaffouli	University Mohammed V-Souissi, Faculty of Medicine and Pharmacy, Mohammed V Military Teaching Hospital, Biosafety Level 3 and Research Laboratory, Rabat, Morocco
27	I Bonmarin	Institut de Veille Sanitaire, France
28	J Carratala*, D Viasus* for the Novel Influenza A (H1N1) Study Group of the Spanish Network for Research in Infectious Diseases (REIPI)	*Department of Infectious Diseases, Hospital Universitari de Bellvitge-IDIBELL, L'Hospitalet de Llobregat, REIPI, University of Barcelona, Barcelona, Spain

Study no†	Authors	Author Affiliation
29	JW Tang ¹²³ , TP Loh ¹ , ESC Koay ¹⁴	¹ Molecular Diagnostic Centre, Department of Laboratory Medicine National University Hospital, Singapore ² Alberta Provincial Laboratory for Public Health, University of Alberta Hospital, Canada ³ Department of Medical Microbiology and Immunology, University of Alberta, Edmonton, Alberta, Canada ⁴ Department of Pathology, National University of Singapore, Singapore
30	J Bettinger ¹ , W Vaudry* (for the Canadian Immunization Monitoring Program, Active [IMPACT]), D Tran ²	¹ Vaccine Evaluation Center, BC Children's Hospital and the University of British Columbia, Pediatrics, Vancouver, BC, Canada * Division of Infectious Diseases, Department of Pediatrics, University of Alberta, Stollery Children's Hospital, Edmonton, Alberta, Canada ² Division of Infectious Diseases, Department of Paediatrics, The Hospital for Sick Children University of Toronto, Canada
31	JT Denholm	Victorian Infectious Diseases Service and Department of Microbiology and Immunology, at the Peter Doherty Institute for Infection and Immunity, Parkville, Australia.
32	KKW To, KY Yuen	Carol Yu Centre for Infection and Div of Infectious Diseases, Dept of Microbiology, The University of Hong Kong, Queen Mary Hospital, Hong Kong
33	G Kuszniierz ¹ , H Escobar ² , E Azziz-Baumgartner ³	¹ National Institute of Respiratory Diseases "Emilio Coni" ANLIS "C. Malbran, Argentina ² Ministry of Health of the province of Santa Fe, Argentina ³ Centers for Disease Control and Prevention, Atlanta, Georgia, USA
34	C Báez ¹ , L Moriconi ¹ , E Azziz-Baumgartner ²	¹ Ministerio de Salud de la Provincia de Buenos Aires, Argentina ² Centers for Disease Control and Prevention, Atlanta, Georgia, USA
35	M Giannella, E Bouza	Department of Clinical Microbiology and Infectious Diseases, Hospital General Universitario Gregorio Marañón, Madrid, Spain
36	M Echavarría, DN Marcone	Clinical Virology Laboratory, CEMIC University Hospital, Galvan 4102, (1431) Buenos Aires, Argentina
37	M Knight* for the UK Obstetric Surveillance System (UKOSS)	* National Perinatal Epidemiology Unit, Nuffield Department of Population Health, University of Oxford, UK
38	M Bassetti	Santa Maria Misericordia Hospital, Udine Italy

Study no†	Authors	Author Affiliation
39	M Ozkan	Dr. Sami Ulus Research and Training Hospital of Women's and Children's Health and Diseases, Clinic of Pediatric Neurology, Ankara, Turkey
40	M Paul ¹ , L Leibovici ²	¹ Division of Infectious Diseases, Rambam Health Care Campus, Haifa, Israel ² Medicine E, Rabin Medical Center, Beilinson Hospital, Petah Tikva, Israel
41	MF Jiménez, FP Mastalir	Departamento de Ginecologia e Obstetrícia - UFCSPA, Preceptora da Residência Médica do Hospital Fêmina, Brazil
42	P Gérardin	¹ NICU/PICU, PFME, CHU Saint Pierre - ² CIC 1410 (CHU/Inserm/ University of La Réunion/URML-OI), CHU Saint Pierre - ³ UMR PIMIT (CHU/Inserm/University of La Réunion/IRD/ CNRS), CYROI, Saint Denis - Reunion island, France
43	E Maltezos, P Zarogoulidis	Unit of Infectious Diseases, University General Hospital of Alexandroupolis, Democritus University Thrace, Dragana, Greece
44	PAD Duarte	Universidade Estadual do Oeste do Paraná - UNIOESTE - Cascavel (PR), Brazil
45	RTC Yokota ¹ , WN Araújo ²	¹ Departamento de Vigilância Epidemiológica, Secretaria de Vigilância em Saúde, Ministério da Saúde, Brasília DF, Brazil ² University of Brasília, Brazil
46	R Linko* for the FINNH1N1-study group	*Helsinki University Hospital, Helsinki, Finland
47	A Kandeel, S Refaey	Ministry of Health in Egypt, Cairo, Egypt
48	SR Dominguez	Department of Pediatric Infectious Diseases, Children's Hospital Colorado, University of Colorado School of Medicine, Aurora, Colorado, USA
49	SH Törün, A Somer	Department of Pediatric Infectious Diseases, Istanbul University Istanbul Medical Faculty, Istanbul, Turkey
50	ST Fanella, G Poliquin	Section of Pediatric Infectious Diseases, University of Manitoba, Winnipeg, Manitoba, Canada
51	S Gubbels	Department of Infectious Disease Epidemiology, Sector for National Health Documentation and Research, Statens Serum Institut, Copenhagen, Denmark
52	TSA Al Khuwaitir, MM Barhoush	Department of Medicine, King Saud Medical City, Riyadh, Kingdom of Saudi Arabia
53	TML Souza, ML Aguiar-Oliveira, MM Siqueira	Laboratory of Respiratory Viruses, Oswaldo Cruz Institute/Fiocruz, Rio de Janeiro, Brazil
54	T Vidmar	General Hospital Slovenj Gradec, Slovenia
55	K Kudo ¹ , T Manabe ²	¹ National Center for Global Health and Medicine, Tokyo Japan ² Graduate School of Public Health, Teikyo

Study no†	Authors	Author Affiliation
		University, Tokyo, Japan
56	AP Anovadiya, CB Tripathi	Department of Pharmacology, Government Medical College and Sir Takhtsinhji General Hospital, Bhavnagar, Gujarat, India
57	VH Borja-Aburto, A Rascon-Pacheco	Instituto Mexicano del Seguro Social (IMSS), Mexico
58	P Liu, W Cui	Department of Infectious Diseases, the First Affiliated Hospital, China Medical University, Shenyang, China
59	E Čeljuska-Tošev, I Kuzman	University Hospital for Infectious Diseases, University of Zagreb, School of Medicine, Zagreb, Croatia
60	JS Nguyen Van-Tam* for the Influenza Clinical Information Network (FLU-CIN)	*Division of Epidemiology and Public Health, University of Nottingham, Nottingham, UK
61	J Skreń-Magierło ¹ , A Florek-Michalska ²	¹ Uniwersytet Rzeszowski, Poland ² Kliniczny Oddział Ginekologii i Poloznictwa, WSS Rzeszow, Poland
62	B Beovic, B Pecavar	Department of Infectious Diseases, University Medical Centre, Ljubljana, Slovenia
63	D Mikic, M Kojic	Military Medical Academy, Clinic for Infectious and Tropical Diseases, Serbia.
64	FG Smith, D Parekh	Perioperative, Critical Care and Trauma Trials Group, School of Clinical and Experimental Medicine, University of Birmingham, UK
65	FP Polack ^{1,2} , R Libster ^{1,2}	¹ Vanderbilt Vaccine Center, Department of Pediatrics, Vanderbilt University, Nashville, TN, USA ² Fundacion INFANT, Buenos Aires, Argentina
66	Z Gao ¹ , J Bao ¹ , Y Chen ² , H Li ² , Q Yu ³ , J Hu ³ , W Zhang ⁴ , W Zuo ⁴	¹ Department of Respiratory & Critical Care Medicine, Peking University People's Hospital, Beijing, China ² Respiratory Department of Fujian Provincial Hospital, Fujian, China ³ Respiratory Department of The First Affiliated Hospital of Lanzhou University, Lanzhou, China ⁴ Respiratory Department of The First Affiliated Hospital of Nanchang University, Jiangxi, China
67	H Burgmann, W Poeppel	Medical University of Vienna, Austria
68	KB Lankarani, B Honarvar M Moghadami	Health Policy Research Center, Shiraz University of Medical Sciences, Shiraz, Iran HIV/AIDS Research Center, Shiraz University of Medical Sciences, Shiraz, Iran
69	P Nymadawa, T Chinbayar	National Influenza Center, National Center of Communicable Diseases, Ministry of Health, Ulaanbaatar, Mongolia
70	PH Hoyer, C Kemen, S Götberg	Cath. Children's Hospital Wilhelmstift, Liliencronstr, Hamburg, Germany

Study no†	Authors	Author Affiliation
71	R Booy, G Khandaker	National Centre for Immunisation Research and Surveillance (NCIRS), The Children's Hospital at Westmead, University of Sydney, New South Wales, Australia
72	Z Memish, M al Masri	Ministry of Health, Riyadh, Kingdom of Saudi Arabia
73	QT Islam, A Basher, R Amin	Dhaka Medical College Hospital, Bangladesh
74	TM Uyeki* for the National Heart, Lung Blood Institute, ARDSNET Clinical Trials (NHLBI ARDS) Network	*Influenza Division, National Center for Immunization and Respiratory Diseases, Centers for Disease Control and Prevention, Atlanta, USA
75	TM Uyeki* for the Pediatric Acute Lung Injury and Sepsis Investigator's (PALISI) Network	*Influenza Division, National Center for Immunization and Respiratory Diseases, Centers for Disease Control and Prevention, Atlanta, USA
76	J Herberg, S Gormley	Section of Paediatrics, Division of Infectious Disease, Imperial College, London, UK
77	A McGeer	Toronto Invasive Bacterial Diseases Network, Toronto, Canada
78	KGI Mohn ^{1,2} , RJ Cox ^{1,2}	¹ Section for Infectious Diseases, Medical Department, and Department of Research and Development, Haukeland University Hospital ² The Influenza Centre, Department of Clinical Science, University of Bergen, Norway ³ Department of Research and Development, Haukeland University Hospital
‡	E Mayo-Montero, E Ballester-Orcal	Instituto de Medicina Preventiva de la Defensa, Capitan Medico Ramon y Cajal (IMPDEF). Ministerio de Defensa, Madrid, Spain
‡	R Bingisser, F Stephan	Department of Emergency Medicine, University Hospital Basel, Switzerland

*Named author

† Baseline characteristics of each constituent dataset are presented in Supplementary Appendix 7.

‡ Centres not included in the current analysis as they include only outpatient data.

Supplementary Appendix 2: Minimum dataset requirement

Data variables	Description/definition
About the data	
1. Source of data	E.g. hospital or emergency department, community/ GP sentinel data, national surveillance data etc.
2. Patient identifier	A unique identifier for each patient e.g. a specific number that corresponds to each patient
Patient characteristics	
1. Age	Date of birth/ age at hospital admission
2. Sex	Male/ female
3. Any other risk factors	Such as obesity/ BMI, smoking status etc.
4. Seasonal influenza vaccination status	Yes/no
Clinical characteristics	
1. Underlying Co-morbidities a) Asthma b) COPD c) Pneumonia d) Other pulmonary diseases e) Other chronic conditions	List of underlying medical conditions for each individual patient
2. Pregnancy	Pregnancy/ fetal wellbeing assessments e.g. weeks of gestation including pregnancy outcome
3. Clinical examinations a) Influenza presenting symptoms on hospital admission b) Admission laboratory examinations performed c) Chest x-ray examination	<ul style="list-style-type: none"> - Date of symptoms onset - List of symptoms presenting at hospital admission - E.g. technique used for laboratory confirmation of influenza AH1N1 e.g. RT-PCR, viral culture, etc. - Date chest x-ray taken - Findings upon x-ray examination
Treatment characteristics	
1. In-hospital antiviral treatment (oseltamivir, zanamivir etc.)	- Date of prescription/ treatment including name of antiviral agent (i.e. oseltamivir/ zanamivir), route of administration(e.g. inhaled, oral , IV), dosage and dose frequency, treatment duration
2. In-hospital antibiotics treatment	- List of names of administered antibiotics including route(e.g. inhaled, oral , IV), dose and dose frequency, duration and dates prescribed
3. Other in-hospital additional treatment therapies e.g. corticosteroids, antipyretics etc.	- List of names of other administered treatments including route(e.g. inhaled, oral , IV), dose and dose frequency, duration and dates prescribed
Outcome (please provide data on at least one of the outcome measures)	
1. Hospitalisation	<ul style="list-style-type: none"> - Dates of admission and discharge - Primary admitting diagnosis for cases

Data variables	Description/definition
	admitted to hospital - Secondary diagnoses
2. Pneumonia	- Yes/ no, Unilateral or bilateral etc.
3. Admission to critical care facilities i.e. ICU and/ or HDU	- Specific dates of transfer and discharge to/ from the HDU or ICU - Primary cause of transfer to HDU/ ICU - Need for invasive mechanical ventilation (MV) including non-invasive mechanical ventilation(NIV) and ECMO - Other severity scores e.g. duration MV, NIV, ECMO
4. Mortality in hospital	- Date of death - Primary cause of death

Supplementary Appendix 3: Standardised dataset - data dictionary

Variable name in Stata	Description	Coding
About the data		
study_group_id	Study group identifier (lookup codes in MS Excel metadata file)	Auto-numbering (_n); string
Patid	Study specific patient ID as provided by study groups; this will only be retained in the individual datasets but dropped from the pooled dataset	string
auto_patid	Auto-numbered patient ID generated for each study group dataset; this will only be retained in the individual datasets but dropped from the pooled dataset	Auto-numbering (_n)
pride_patid	Unique patient identifier created by concatenation of study_group_id and auto-numbered patient id (auto_patid)	String
data_source	Whether hospital, community or ICU	1=hospital 2= ICU 3= community
Country	Country identifier	String
Patient characteristics		
age_years	Age (at admission) in years; continuous variable	Place all under 1s in one category (replace <1s as '0')
sex	gender	1=male 0=female
obese	Either clinically recorded obesity or derived from BMI (BMI>30)	1= yes 0= no
smoking	Current smoking status (ex and non-smokers will be considered one category)	1= yes 0= no
pregnant	Pregnancy (for sub-group analyses including pregnant women, only women of child-bearing age (13-54 years) will be considered)	1= yes 0= no (no separate code for 'not applicable'; men and women not of child-bearing age will be dropped from any analyses including pregnant women)
comorbidity	Whether any co-existing comorbidity was present (either as recorded or derived on the basis of a record of one of the	1= any comorbidity 0= no recorded comorbidity

Variable name in Stata	Description	Coding
	<p>following comorbidities: asthma, COPD, other chronic lung disease, heart disease, cerebrovascular disease (not including uncomplicated hypertension), chronic liver disease, chronic renal disease, diabetes, neurological disease (including neurodevelopmental disorders), lymphoma, leukaemia, other malignancy, immunosuppression)</p> <p>Note: pregnancy will not be considered a 'comorbidity' and nor will obesity</p>	
asthma	Asthma as recorded	1= yes 0= no
copd	COPD as recorded	1= yes 0= no
other_lung_ds	Chronic pulmonary diseases (other than asthma or COPD)	1= yes 0= no
heart_ds	Chronic heart disease as recorded (includes congenital heart disease, hypertension with cardiac complications, chronic heart failure, individuals requiring regular medication and/or follow-up for ischaemic heart disease)	1= yes 0= no
renal_ds	Chronic kidney disease (CKD) as recorded including CKD at stage 3, 4 or 5, chronic kidney failure, nephrotic syndrome, kidney transplantation.	1= yes 0= no
liver_ds	Chronic liver disease as recorded (including cirrhosis, biliary atresia, chronic hepatitis)	1= yes 0= no
cerebrovascular_ds	Cerebrovascular disease as recorded (including stroke, transient ischaemic attack but not including uncomplicated hypertension)	1= yes 0= no
neurological_ds	Neurological disease as recorded (including	1= yes 0= no

Variable name in Stata	Description	Coding
	neurodevelopmental disorders)	
diabetes	Diabetes as recorded (including Type 1 diabetes, type 2 diabetes requiring insulin or oral hypoglycaemic drugs, diet controlled diabetes.)	1= yes 0= no
immunosuppression	Immunosuppression due to disease or treatment. Includes patients undergoing chemotherapy leading to immunosuppression; asplenia or splenic dysfunction and HIV infection at all stages.	1=yes 0= no
swine_flu_vac	Swine H1N1 vaccination	1= yes 0= no
clinical characteristics		
onset_date	Date of onset of influenza like illness (ILI)	Recorded as date dd/mm/yy
admission_date	Date of first admission to hospital (whether to a general ward, HDU or ICU)	Recorded as date dd/mm/yy
time_to_admission	Time (in days) from onset of symptoms to hospital admission	Recorded as number of days
symptom_score	Severity of illness on presentation to hospital; non-weighted score derived by assigning a score of 1 for each of the following symptoms and then adding these together (myalgia; malaise; headache; sore throat; cough; nasal symptoms including runny nose, stuffy nose, sneezing; diarrhoea/vomiting) Note: fever and shortness of breath will be considered as separate variables to emphasise greater weighting of these symptoms	Recorded as score (maximum score of 7 possible)
fever	Fever on presentation (as recorded)	1= yes 0= no
shortness_of_breath	Shortness of breath at presentation (as recorded)	1= yes 0= no
severe_respiratory_distress	Severe respiratory distress at admission	1= yes 0= no
flu_diag	Method of diagnosis of swine flu whether clinical or laboratory diagnosis (this	1= clinical 2= laboratory diagnosis (not otherwise specified) or

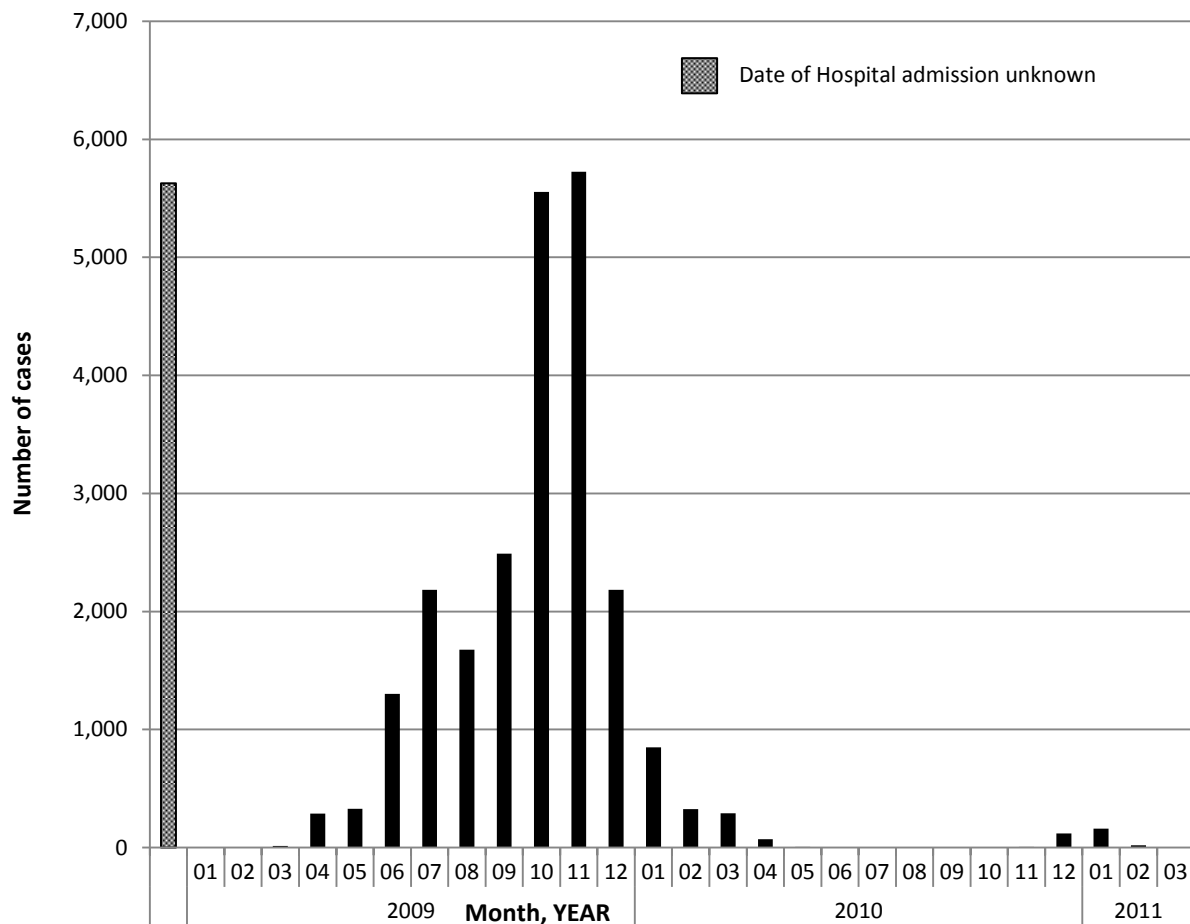
Variable name in Stata	Description	Coding
	includes RT-PCR, Direct Fluorescent Antibody test (DFA), Viral Culture, Rapid Antigen test)	confirmed using various laboratory tests
severe_disease	Severity was defined using standard severity measures such as AVPU, GCS, SOFA or CURB-65 scores where available. Alternatively, the following proxy indicators were used in order of preference: i) severe respiratory distress (tachypnoea, dyspnoea, evidence of alveolar flooding on radiograph, arterial blood gas analysis, cyanosis, excessive respiratory effort) ii) shortness of breath, iii) Symptom score (as defined earlier).	As provided
Treatment		
antiviral_start_date	Date of start of antiviral treatment	Recorded as dd/mm/yy
preadmit_antiviral	Preadmission antiviral (either oseltamivir, zanamivir or peramivir)	1= yes 0= no
oseltamivir_start_date	Date of start of oseltamivir treatment	Recorded as dd/mm/yy
preadmit_oseltamivir	Preadmission oseltamivir	1= yes 0= no
zanamivir_start_date	Date of start of zanamivir treatment	Recorded as dd/mm/yy
preadmit_zanamivir	Preadmission zanamivir	1= yes 0= no
antibiotic_start_date	Date of start of antibiotic treatment	Recorded as dd/mm/yy
hospital_oseltamivir	Oseltamivir given in hospital	1= yes 0= no
hospital_zanamivir	Zanamivir given in hospital	1= yes 0= no
hospital_peramivir	Peramivir given in hospital	1=yes 0=no
hospital_antibiotic	Antibiotics given in hospital	1= yes 0= no
antiviral_anytime	Antiviral administered at any time (whether in the community or in hospital)	1= yes 0= no
early_antiviral1	Antiviral administered ≤ 2 days of symptom onset (whether in	1= early antiviral 0= no antiviral

Variable name in Stata	Description	Coding
	the community or in hospital) versus no antiviral treatment	
early_antiviral2	Antiviral administered ≤ 2 days of symptom onset (whether in the community or in hospital) versus late antiviral treatment	1= early antiviral 0= late antiviral
lt_2days	Antiviral administered > 2 days of symptom onset (whether in the community or in hospital) versus no antiviral treatment	1= late antiviral (> 2 days) 0= no treatment
lt_5days	Antiviral administered ≥ 5 days of symptom onset (whether in the community or in hospital) versus no antiviral treatment	1= late antiviral (> 5 days) 0= no treatment
oseltamivir_anytime	Oseltamivir administered at any time (whether in the community or in hospital)	1= yes 0= no
early_oseltamivir1	Oseltamivir administered ≤ 2 days of symptom onset (whether in the community or in hospital) versus no antiviral treatment	1= early oseltamivir 0= no antiviral treatment
early_oseltamivir2	Oseltamivir administered ≤ 2 days of symptom onset (whether in the community or in hospital) versus late oseltamivir (administered > 2 days after symptom onset)	1= early oseltamivir 0= late oseltamivir
zanamivir_anytime	Zanamivir administered at any time (whether in the community or in hospital)	1= yes 0= no
early_zanamivir1	Zanamivir administered ≤ 2 days of symptom onset (whether in the community or in hospital) versus no antiviral treatment	1= early zanamivir 0= no antiviral treatment
early_zanamivir2	Zanamivir administered ≤ 2 days of symptom onset (whether in the community or in hospital) versus late zanamivir (administered > 2 days after symptom onset)	1= early zanamivir 0= late zanamivir
peramivir_anytime	Peramivir administered at any time (whether in the community or in hospital); note: peramivir was authorised for emergency use in patients with swine flu during the pandemic in some	1= yes 0= no

Variable name in Stata	Description	Coding
	countries	
early_peramivir1	Peramivir administered ≤ 2 days of symptom onset (whether in the community or in hospital) versus no antiviral treatment	1= early peramivir 0= no antiviral treatment
early_peramivir2	Peramivir administered ≤ 2 days of symptom onset (whether in the community or in hospital) versus late peramivir (administered > 2 days after symptom onset)	1= early peramivir 0= late peramivir
non_nai_anytime	Treatment with non-NAI antiviral drugs at any time (amantadine, rimantadine, ribavirin)	1= yes 0= no
hosp_non_nai	In-hospital treatment with non-NAI antiviral drugs (amantadine, rimantadine, ribavirin)	1= yes 0= no
hosp_steroid	New steroids administered in hospital (dexamethasone, hydrocortisone, prednisolone)	1= yes 0= no
Outcomes		
discharge_date	Date of discharge from hospital	Recorded as date dd/mm/yy
length_of_stay	Length of stay in hospital (whether general ward or ICU) in days	Number of days
critical_care	Admission to critical care facilities (ICU)	1= yes 0= no
icu_admit_date	Date of admission to ICU	Recorded as dd/mm/yy
icu_discharge_date	Date of ICU discharge	Recorded as dd/mm/yy
icu_lengthstay	Length of ICU stay	Recorded as a continuous variables (no. of days)
Pneumonia	Pneumonia as recorded (whether clinically diagnosed or radiologically diagnosed or discerned from free text chest x-ray report findings)	1= yes 0= no
pneum_diag	Method of diagnosis of pneumonia (clinical or radiological)	1= radiological diagnosis 0= clinical diagnosis
death	Death (as recorded)	1= yes 0= no
dod	Date of death	Recorded as dd/mm/yy
death_cause	Primary cause of death	Free text
death_cause_code	Cause of death categories	1= unrelated to flu 2= influenza related

Variable name in Stata	Description	Coding
		3= sepsis 4= ARDS/ respiratory failure 5= pneumonia 6= multiorgan failure 7= brain death (unspecified) 8= renal failure 9= liver failure 10= shock 11= CVS
P	Propensity scores for treatment-yes vs. no	Recorded as a continuous variable between 0 and 1
ps_quintile	Propensity scores categorised into quintiles for each individual study for NAI treatment- yes vs. no	Categorical variable with values from 1 to 5 (1=lowest quintile and 5=highest quintile)
p_1	Propensity scores for treatment-Early treatment (≤ 2 days) vs. no NAI treatment	Recorded as a continuous variable between 0 and 1
ps1_quintile	Propensity scores categorised into quintiles for each individual study for early treatment (≤ 2 days) vs. no treatment	Categorical variable with values from 1 to 5 (1=lowest quintile and 5=highest quintile)
p_2	Propensity scores for treatment-Early treatment (≤ 2 days) vs. Later treatment (> 2 days)	Recorded as a continuous variable between 0 and 1
ps2_quintile	Propensity scores categorised into quintiles for each individual study for early treatment (≤ 2 days) vs. later treatment (> 2 days)	Categorical variable with values from 1 to 5 (1=lowest quintile and 5=highest quintile)
p_lt2	Propensity scores for treatment-Later treatment (> 2 days) vs. no NAI treatment	Recorded as a continuous variable between 0 and 1
pslt2_quintile	Propensity scores categorised into quintiles for each individual study for late treatment (> 2 days) vs. no NAI treatment	Categorical variable with values from 1 to 5 (1=lowest quintile and 5=highest quintile)

Supplementary Appendix 4: Date of admission of 29,234 patients hospitalized with A(H1N1)pdm09 infection (by month)



** Due to scale, small numbers of hospitalisations are not visible; there were no hospitalisations in June 2010. Some patients were hospitalised due to other conditions but contracted nosocomial influenza (interval between hospital admission and symptom onset ≥ 3 days) (n=226; 1.03%).

Supplementary Appendix 5: Absolute risks of mortality for various exposure categories and subgroups

Population Subgroups	Number of deaths, n/N (%)		
	No NAI antiviral	NAI Antiviral at any time	Early Antiviral (initiated ≤ 2 days of symptom onset)
Lab and clinically confirmed (all ages)	959/10431 (9.2)	1825/18803 (9.7)	358/5995 (6.0)
Lab confirmed cases (all ages)	721/7319 (9.9)	1765 /17682 (10.0)	356/5882 (6.1)
Adults (16 years and above)	830/6813 (12.2)	1620/13,003 (12.5)	307/3796 (8.1)
Children (below 16 years)	122/3540 (3.5)	203/5678 (3.6)	50/2155 (2.3)
Pregnant women	45/845 (5.3)	132/1321 (10.0)	21/458 (4.6)
ICU patients (all ages)	387/881 (43.9)	1570/5967 (26.3)	318/1310 (24.3)
Adults (≥ 16 years)	326/610 (53.4)	1393/4493 (31.0)	276/1000 (27.6)
Children (<16 years)	58/267 (21.7)	176/1458 (12.1)	42/305 (13.8)

Supplementary Appendix 6: Characteristics of individual studies contributing to the pooled analysis and publications arising from them

Study No.	Country	Patients source	Total No. of cases supplied	No. of cases used†	Median age, years at hospital admission (Range)	Male (%)	No. of cases with any comorbidity § (%)	Time to hospital admission, days, median (IQR)	No. treated with NAI (%)	Time to NAI after symptoms, days, median (IQR)	Length of hospital stay, days, median (IQR)	No. of cases admitted to ICU (%)	No. of deceased patients (%)	Publications arising from dataset‡
1	Singapore	ED; Single Center	110	110	24 (10-56)	62 (56)	7 (6)	2 (1 - 3)	110 (100)	-	4 (3 - 5)	0(0)	0 (0)	1
2	Bangladesh	Hospital; Surveillance	147	141	23 (<1 -72)	85 (60)	43 (31)	3 (2 - 5)	26 (18)	4 (2 - 6)	5 (3 - 6)	-	5 (4)	2
3	Iran	Hospital; Single Center	46	46	32 (15 - 66)	26 (57)	19 (41)	5 (3 - 7)	46 (100)	5 (3 - 7)	-	20 (43)	7 (46)	3
4	Spain	ICU; Multi-center	1091	1078	47 (1 - 86)	663 (62)	571 (54)	4 (2 - 6)	1063 (99)	5 (3 - 7)	15 (9 - 28)	1078 (100)	265 (25)	4, 5
5	Mexico	Outpatients, Hospitalised; Multi-center	446	266	39 (<1 - 85)	161 (61)	63 (24)	0 (0 - 0)	266 (100)	5 (0 - 8)	15 (11 - 22)	76 (29)	28 (11)	6
6	UK	ICU; Single Center	8	6	5 (<1 - 8)	3 (75)	5 (83)	-	6 (100)	-	-	6 (100)	0(0)	7
7	Netherlands	ICU; Multi-center	14	14	13 (<1 - 16)	9 (64)	8 (57)	-	14 (100)	3 (2 - 11)	-	14 (100)	0(0)	8
8	Hong Kong, China	ICU; Single Center	17	17	54 (19 - 65)	11 (65)	6 (35)	4 (3 - 7)	16 (94)	*	41 (24 - 60)	17 (100)	1 (6)	-
9	Lithuania	Hospital; Multi-center	121	121	31 (18 - 83)	52 (43)	42 (35)	2 (1 - 3)	70 (58)	3 (2 - 6)	6 (4 - 8)	9 (8)	6 (5)	9
10	Switzerland	Outpatients, Hospitalised; Single Center	15	14	43 (30 - 82)	10 (71)	9 (64)	5 (2 - 6)	14 (100)	7 (3 - 9)	9 (8 - 13)	6 (43)	0(0)	10
11	Germany	Hospital; Single Center	315	154	1 (<1 - 18)	85 (55)	98 (64)	2 (1 - 4)	42 (27)	-	3 (1 - 5)	11 (7)	1 (1)	-
12	China	Outpatients, Hospitalised; Single Center	65	50	43 (14 - 75)	31 (62)	32 (64)	5 (4 - 7)	50 (100)	5 (4 - 7)	7 (5 - 11)	34 (68)	9 (18)	-
13	China	Hospital; Multi-center	155	155	39 (15 - 93)	90 (58)	62 (40)	5 (3 - 7)	132 (85)	*	10 (4 - 17)	74 (48)	27 (17)	11
14	Turkey	ICU; Single Center	20	20	36 (15 - 72)	10 (50)	10 (50)	5 (3 - 6)	20 (100)	5 (4 - 6)	5 (4 - 8)	20 (100)	9 (45)	12
15	Argentina	Outpatients, Hospitalised; Single Center	36	23	38 (16 - 82)	14 (61)	9 (39)	3 (2 - 4)	23 (100)	3 (2 - 4)	8 (4 - 19)	7 (30)	5 (22)	13
16	Spain	Outpatients, Hospitalised; Multi-center	57	48	46 (18 - 84)	28 (58)	26 (54)	5 (3 - 7)	48 (100)	6 (3 - 7)	5 (3 - 9)	11 (23)	2 (4)	14

Study No.	Country	Patients source	Total No. of cases supplied	No. of cases used†	Median age, years at hospital admission (Range)	Male (%)	No. of cases with any comorbidity § (%)	Time to hospital admission, days, median (IQR)	No. treated with NAI (%)	Time to NAI after symptoms, days, median (IQR)	Length of hospital stay, days, median days (IQR)	No. of cases admitted to ICU (%)	No. of deceased patients (%)	Publications arising from dataset‡
17	Iran	Outpatients, Hospitalised; Single Center	434	143	34 (14 - 86)	66 (46)	66 (48)	4 (2 - 6)	143 (100)	4 (2 - 6)	3 (2 - 5)	52 (36)	17 (12)	15
18	Canada	Outpatients, Hospitalised; Single Center	148	32	5 (<1 - 18)	20 (63)	20 (63)	3 (1 - 5)	27 (84)	-	4 (2 - 9)	7 (22)	0(0)	16
19	South Africa	Hospital; Single Center	46	41	27 (<1 - 70)	4 (10)	26 (63)	1 (0 - 4)	41 (100)	2 (0 - 4)	15 (7 - 26)	26 (62)	14 (34)	17
20	Argentina	Hospital; Multi-center	112	112	27 (<1 - 79)	32 (29)	39 (35)	2 (1 - 4)	109 (97)	3 (1 - 5)	5 (3 - 11)	43 (38)	23 (21)	-
21	Poland	Hospital; Single Center	24	24	7 (<1 - 17)	8 (33)	8 (33)	-	24 (100)	2 (1 - 4)	4 (3 - 5)	1 (4)	0(0)	18
22	Jordan	Hospital; Single Center	81	45	7 (1 - 19)	27 (60)	42 (100)	-	45 (100)	1 (1 - 1)	4 (3 - 6)	6 (14)	0(0)	19
23	Israel	Outpatients, Hospitalised; Single Center	73	37	6 (1 - 17)	19 (51)	23 (62)	-	25 (68)	-	3 (2 - 6)	2 (5)	0(0)	20
24	Australia	Hospital; Single Center	106	95	28 (<1 - 76)	35 (37)	62 (65)	-	84 (88)	-	2 (1 - 4)	13 (14)	2 (2)	21
25	Turkey	Hospital; Single Center	204	204	31 (16 - 86)	98 (48)	98 (48)	3 (2 - 4)	196 (96)	-	3 (2 - 5)	19 (9)	4 (2)	22
26	Morocco	Outpatients, Hospitalised; Single Center	640	16	29 (1 - 42)	6 (38)	12 (75)	-	16 (100)	-	4 (3 - 4)	2 (13)	0(0)	23
27	France	Hospital; Single Center	1770	1220	38 (<1 - 104)	638 (52)	616 (50)	2 (1 - 4)	1101 (90)	2 (1 - 5)	6 (3 -14)	881 (72)	175 (14)	24, 25
28	Spain	Hospital; Multi-center	698	697	41 (16 - 97)	366 (53)	345 (50)	3 (2 - 5)	665 (94)	3 (2 - 6)	6 (3 - 9)	118 (17)	37 (5)	26, 27
29	Singapore	Outpatients, Hospitalised; Single Center	584	339	19 (<1 - 93)	175 (52)	161 (47)	2 (1 - 3)	284 (84)	3 (2 - 5)	2 (1 - 4)	22 (6)	3 (1)	28
30	Canada	Hospital; Multi-center	300	299	6 (<1 - 19)	176 (59)	196 (66)	2 (1 - 5)	270 (90)	3 (1 - 5)	5 (3 - 11)	131 (44)	7 (2)	29, 30
31	Australia	Hospital; Single Center	105	105	42 (15 - 79)	49 (47)	71 (68)	3 (2 - 5)	89 (85)	3 (2 - 5)	5 (3 - 8)	27 (26)	3 (3)	31
32	Hong Kong	Hospital; Single Center	69	61	45 (18 - 95)	24 (39)	43 (70)	2 (1 - 3)	55 (90)	3 (2 - 5)	4 (2 - 6)	3 (5)	1 (2)	32
33	Argentina	Hospital; Single Center	197	196	36 (<1 - 89)	94 (48)	116 (59)	3 (1 - 7)	196 (100)	5 (2 - 7)	6 (3 - 12)	73 (38)	49 (25)	-

Study No.	Country	Patients source	Total No. of cases supplied	No. of cases used†	Median age, years at hospital admission (Range)	Male (%)	No. of cases with any comorbidity § (%)	Time to hospital admission, days, median (IQR)	No. treated with NAI (%)	Time to NAI after symptoms, days, median (IQR)	Length of hospital stay, days, median (IQR)	No. of cases admitted to ICU (%)	No. of deceased patients (%)	Publications arising from dataset‡
34	Argentina	ICU, Hospitalised, Outpatients; Single Center	354	194	33 (<1 - 84)	97 (51)	36 (19)	4 (2 - 6)	116 (60)	-	5 (2 - 8)	29 (15)	27 (14)	-
35	Spain	Hospital; Single Center	91	91	42 (13-79)	37 (41)	63 (69)	2 (0 - 3)	83 (91)	2 (0 - 4)	7 (4 - 23)	30 (33)	7 (8)	33
36	Argentina	Outpatients, Hospitalised; Single Center	513	68	34 (<1 - 80)	36 (53)	16 (24)	-	49 (72)	-	-	16 (24)	5 (7)	34
37	UK	Hospital; Surveillance	272	222	27 (16 - 48)	0 (0)	70 (32)	2 (0 - 4)	186 (84)	2 (1 - 5)	3 (2 - 6)	44 (20)	2 (1)	35, 36
38	Italy	Hospital; Single Center	81	81	32 (1 - 81)	45 (56)	43 (53)	-	69 (85)	2 (1 - 3)	5 (3 - 7)	9 (11)	2 (2)	37
39	Turkey	Hospital; Single Center	15	15	2 (<1 - 8)	7 (47)	1 (7)	0 (0 - 1)	15 (100)	0 (0 - 1)	1 (1 - 3)	4 (27)	1 (7)	38
40	Israel	Hospital; Multi-center	506	504	43 (16 - 93)	240 (48)	305 (61)	3 (1 - 4)	450 (89)	3 (2 - 5)	6 (5 - 10)	34 (7)	18 (4)	39
41	Brazil	Hospital; Single Center	21	21	23 (15 - 32)	0 (0)	1 (5)	1 (0 - 2)	21 (100)	1 (0 - 2)	6 (3 -12)	6 (30)	0 (0)	40
42	France	Outpatients, Hospitalised; Single Center	549	84	24 (14 - 42)	0 (0)	26 (33)	2 (1 - 2)	73 (87)	2 (1 - 2)	4 (3 - 4)	1 (1)	0 (0)	41
43	Greece	Hospital; Single Center	34	34	34 (14 - 65)	23 (68)	25 (74)	-	34 (100)	*	6 (5 - 6)	0 (0)	0 (0)	42
44	Brazil	ICU; Multi-center	37	37	33 (18 - 80)	17 (46)	13 (35)	6 (4 - 10)	33 (89)	-	9 (6 - 23)	37 (100)	21 (57)	43
45	Brazil	Hospital; Multi-center	164	163	32 (<1 - 73)	81 (50)	-	5 (3 - 7)	93 (57)	5 (3 - 7)	6 (3 - 11)	92 (56)	49 (30)	44
46	Finland	ICU; Multi-center	132	132	49 (<1 - 88)	85 (64)	96 (73)	3 (1 - 6)	126 (95)	4 (2 - 6)	14 (7 - 26)	132 (100)	10 (8)	45
47	Egypt	Hospital; Surveillance	1943	1941	21 (<1 - 88)	1067 (55)	360 (19)	2 (1 - 3)	1941 (100)	2 (1 - 3)	5 (4 - 7)	375 (83)	457 (24)	-
48	USA	Hospital; Single Center	307	304	6 (<1 - 22)	185 (61)	216 (71)	3 (1 - 5)	268 (88)	3 (1 - 5)	3 (2 - 6)	79 (26)	8 (3)	46
49	Turkey	Hospital; Surveillance	114	114	6 (<1 - 16)	68 (60)	67 (59)	2 (2 - 4)	114 (100)	2 (2 - 4)	6 (5 - 10)	12 (11)	0 (0)	47
50	Canada	Hospital; Single Center	81	80	1 (<1 - 16)	42 (53)	38 (48)	4 (2 - 7)	53 (66)	5 (4 - 7)	4 (2 - 9)	12 (15)	1 (1)	48
51	Denmark	ICU; Surveillance	53	51	47 (3 - 80)	30 (59)	37 (73)	3 (1 - 6)	47 (92)	5 (2 - 8)	15 (3 - 26)	51 (100)	18 (35)	49

Study No.	Country	Patients source	Total No. of cases supplied	No. of cases used†	Median age, years at hospital admission (Range)	Male (%)	No. of cases with any comorbidity § (%)	Time to hospital admission, days, median (IQR)	No. treated with NAI (%)	Time to NAI after symptoms, days, median (IQR)	Length of hospital stay, days, median (IQR)	No. of cases admitted to ICU (%)	No. of deceased patients (%)	Publications arising from dataset‡
52	Saudi Arabia	Hospital; Single Center	127	127	27 (11 - 79)	100 (79)	67 (53)	3 (1 - 4)	127 (100)	3 (1 - 4)	6 (5 - 9)	15 (12)	4 (3)	50
53	Brazil	Outpatients, Hospitalised; Surveillance	16383	3139	26 (<1 - 94)	1283 (41)	1334 (48)	-	555 (18)	-	-	-	171 (5)	-
54	Slovenia	Outpatients, Hospitalised; Single Center	78	50	30 (<1 - 87)	36 (72)	20 (40)	2 (1 - 5)	33 (66)	4 (2 - 6)	4 (2 - 6)	4 (8)	3 (6)	-
55	Japan	Hospital; Single Center	104	103	7 (<1 - 72)	53(51)	27 (26)	2 (1 - 3)	103 (100)	2 (1 - 3)	7 (5 - 9)	5 (5)	1 (1)	51
56	India	Hospital; Single Center	61	61	22 (<1 - 60)	35 (57)	16 (26)	5 (3 - 7)	61 (100)	5 (3 - 7)	7 (6 - 11)	3 (5)	9 (15)	-
57	Mexico	Outpatients, Hospitalised; Surveillance	127289	6520	29 (<1 - 99)	2940 (45)	1581 (24)	2 (1 - 5)	1167 (18)	-	4 (2 - 7)	563 (9)	795 (12)	52
58	China	Hospital; Single Center	72	72	41 (18 - 66)	54 (75)	23 (32)	8 (6 - 10)	72 (100)	7 (4 - 9)	10 (6 - 19)	35 (49)	10 (14)	53
59	Croatia	Hospital; Single Center	169	169	29 (<1 - 83)	95 (56)	71 (42)	2 (1 - 4)	139 (82)	2 (1 - 5)	6 (4 - 10)	34 (20)	4 (2)	54
60	UK	Hospital; Multi-center	1520	1520	26 (<1 - 95)	720 (47)	745 (49)	2 (1 - 4)	1124 (74)	3 (1 - 5)	3 (2 - 7)	250 (16)	81 (5)	55
61	Poland	Hospital; Single Center	13	13	27 (6 - 75)	4 (31)	5 (38)	2 (0 - 2)	10 (77)	5 (2 - 9)	11 (7 - 16)	4 (31)	3 (23)	-
62	Slovenia	Hospital; Single Center	66	64	39 (16 - 87)	31 (48)	37 (58)	4 (2 - 6)	62 (97)	4 (2 - 6)	4 (3 - 6)	9 (14)	2 (3)	56
63	Serbia	Hospital; Single Center	98	98	27 (14 - 88)	68 (69)	18 (18)	3 (1 - 5)	69 (70)	3 (1 - 5)	7 (6 - 9)	6 (6)	2 (2)	57
64	UK	ICU; Single Center	24	24	48 (22 - 80)	13 (54)	20 (83)	5 (3 - 8)	24 (100)	5 (3 - 9)	22 (8 - 43)	24 (100)	7 (29)	58
65	Argentina	Hospital; Multi-center	251	250	0.8 (<1 - 19)	130 (52)	81 (34)	4 (2 - 7)	208 (83)	7 (4 - 10)	8 (5 - 13)	46 (18)	13 (5)	59
66	China	Hospital; Multi-center	367	367	21 (<1 - 84)	214 (58)	52 (14)	2 (1 - 4)	362 (99)	3 (1 - 5)	7 (5 - 10)	57 (16)	20 (5)	-
67	Austria	Outpatients, Hospitalised; Multi-center	540	341	21 (<1 - 91)	241 (71)	122 (36)	-	241 (71)	-	7 (5 - 9)	47 (14)	14 (4)	60
68	Iran	Hospital; Multi-center	484	484	31 (1 - 84)	201 (42)	45 (9)	3 (2 - 6)	464 (96)	3 (2 - 7)	2 (2 - 4)	44 (9)	6 (1)	61
69	Mongolia	Hospital; Surveillance	204	202	21 (1 - 76)	105 (52)	80 (40)	3 (1 - 5)	107 (53)	-	5 (4 - 7)	6 (3)	0 (0)	-

Study No.	Country	Patients source	Total No. of cases supplied	No. of cases used†	Median age, years at hospital admission (Range)	Male (%)	No. of cases with any comorbidity § (%)	Time to hospital admission, days, median (IQR)	No. treated with NAI (%)	Time to NAI after symptoms, days, median (IQR)	Length of hospital stay, days, median (IQR)	No. of cases admitted to ICU (%)	No. of deceased patients (%)	Publications arising from dataset‡
70	Germany	Hospital; Single Center	92	92	4 (<1 - 18)	47 (51)	13 (14)	2 (1 - 4)	28 (30)	2 (1 - 5)	3 (2 - 5)	6 (7)	0 (0)	62
71	Australia	Hospital; Multi-centre	601	458	4 (<1 - 15)	266 (58)	208 (45)	2 (1 - 4)	245 (53)	2 (1 - 6)	2 (1 - 5)	54 (12)	3 (1)	63
72	Saudi Arabia	Outpatients, Hospitalised; Surveillance	3228	2362	17 (<1 - 90)	1187 (50)	533 (23)	2 (1 - 3)	2296 (97)	2 (1 - 4)	-	209 (9)	25 (1)	-
73	Bangladesh	Hospital; Single Center	28	8	23 (3 - 50)	2 (25)	1 (13)	1 (0 - 4)	8 (100)	1 (0 - 4)	6 (4 - 6)	-	0 (0)	64
74	USA	ICU; Multi-center	630	630	47 (13 - 92)	285 (45)	367 (58)	4 (2 - 7)	586 (93)	3 (2 - 6)	11 (5 - 21)	630 (100)	146 (23)	65
75	USA	ICU; Multi-center	838	838	6 (<1 - 20)	485 (58)	558 (67)	2 (1 - 5)	758 (90)	1 (0 - 3)	7 (4 - 15)	838 (100)	74 (8)	66
76	UK	Hospital; Single Center	41	34	4 (<1 - 15)	17 (50)	16 (53)	3 (1 - 5)	27 (79)	4 (1 - 6)	6 (3 - 15)	14 (41)	9 (26)	67
77	Canada	Hospital; Single Center	1014	1014	29 (<1 - 92)	523 (52)	541 (53)	3 (1 - 5)	746 (73)	*	3 (2 - 7)	167 (16)	55 (5)	-
78	Norway	Hospital; Single Center	129	129	47 (15 - 93)	59 (46)	60 (47)	3 (1 - 7)	94 (73)	3 (1 - 6)	3 (1 - 6)	7 (5)	1 (1)	68
SUMMARY OF AVAILABLE DATA														
Studies with information on Early (≤2 days) versus Late (>2 days) NAI treatment														
TOTAL (63 studies)				13,254	27 (<1 - 97)	6918 (52)	5408 (41)	2 (1 - 5)	13254 (100)	3 (1 - 5)	6 (3 - 11)	4079 (34)	1300 (10)	
Studies with information on timing of NAI administration (as continuous variable)														
TOTAL (59 studies)				12,284	27 (<1 - 97)	6404 (52)	4896(40)	2 (1 - 5)	12284 (100)	3 (1 - 5)	6 (3 - 11)	3838 (35)	1224 (10)	
ALL STUDIES														
TOTAL (78 studies)				29,234	26 (<1 - 104)	14431(49)	11011 (38)	2 (1 - 5)	18803 (64)	3 (1 - 5)	5 (2 - 9)	6848 (28)	2784 (10)	

ED, Emergency department; IQR, interquartile range (25th and 95th percentile)

†Include hospitalised patients with complete information on NAI treatment and survival status; §comorbidity as a defined in supplementary appendix 3; ‡ publications emerging from these datasets whether referring specifically to mortality or not; * data supplied as binary variable (Early (≤2 days) versus Later (>2 days) NAI treatment)

‡Publications arising from each dataset

1. Ling LM, Chow AL, Lye DC, et al. Effects of early oseltamivir therapy on viral shedding in 2009 pandemic influenza A (H1N1) virus infection. *Clinical Infectious Diseases* 2010; **50**(7): 963-9.
2. Azziz-Baumgartner E, Rahman M, Al Mamun A, et al. Early Detection of Pandemic (H1N1) 2009, Bangladesh. *Emerging infectious diseases* 2012; **18**(1): 146.
3. Tabarsi P, Moradi A, Marjani M, et al. Factors associated with death or intensive care unit admission due to pandemic 2009 influenza A (H1N1) infection. *Annals of Thoracic Medicine* 2011; **6**(2): 91-5.
4. Rodríguez A, Díaz E, Martín-Loeches I, et al. Impact of early oseltamivir treatment on outcome in critically ill patients with 2009 pandemic influenza A. *Journal of antimicrobial chemotherapy* 2011; **66**(5): 1140-9.
5. Rodriguez A, Martin-Loeches I, Bonastre J, et al. First influenza season after the 2009 pandemic influenza: Report of the first 300 ICU admissions in Spain. . *Medicina Intensiva* 2011; **35**(4): 208-16.
6. Higuera Iglesias AL, Kudo K, Manabe T, et al. Reducing occurrence and severity of pneumonia due to pandemic H1N1 2009 by early oseltamivir administration: a retrospective study in Mexico. *PLoS ONE [Electronic Resource]* 2011; **6**(7).
7. Seale AC, Toussaint FS, Finn A, Fraser JI. Prescribing in a pandemic: best use of oseltamivir in paediatric intensive care. *Arch Dis Child* 2011; **96**(9): 902-3.
8. van Zwol A, Witteveen R, Markhorst D, Geukers VG. Clinical features of a Dutch cohort of critically ill children due to the 2009 new influenza A H1N1 pandemic. *Clinical pediatrics* 2011; **50**(1): 69-72.
9. Mickienė A, Daniusevičiūtė L, Vanagaitė N, et al. Hospitalized adult patients with 2009 pandemic influenza A (H1N1) in Kaunas, Lithuania. *Medicina (Kaunas, Lithuania)* 2011; **47**(1): 11.
10. Bertisch B, Vernazza P, Boggian K. Patients with influenza A/H1N1v-associated pneumonia: the perspective of a tertiary care hospital in Switzerland. *Swiss Med Wkly* 2010; **140**: w13069.
11. Cao B, Li X-W, Mao Y, et al. Clinical features of the initial cases of 2009 pandemic influenza A (H1N1) virus infection in China. *New England Journal of Medicine* 2009; **361**(26): 2507-17.
12. Sertogullarindan B, Ozbay B, Gunini H, et al. Clinical and prognostic features of patients with pandemic 2009 influenza a (H1N1) virus in the intensive care unit. *African Health Sciences* 2011; **11**(2): 163-70.
13. Bantar C, Oliva ME, Ré HA, et al. Severe acute respiratory disease in the setting of an epidemic of swine-origin type A H1N1 influenza at a reference hospital in Entre Ríos, Argentina. *Clinical infectious diseases* 2009; **49**(9): 1458-60.
14. Riquelme R, Torres A, Rioseco ML, et al. Influenza pneumonia: a comparison between seasonal influenza virus and the H1N1 pandemic. *European Respiratory Journal* 2011; **38**(1): 106-11.
15. Dashti-Khavidaki S, Khalili H, Gholamalipour F, et al. Approach to Pandemic 2009 influenza: first report from a main referral hospital for Pandemic H1N1 influenza care in Iran. *The Journal of Infection in Developing Countries* 2010; **4**(10): 629-35.
16. Morris SK, Parkin P, Science M, et al. A retrospective cross-sectional study of risk factors and clinical spectrum of children admitted to hospital with pandemic H1N1 influenza as compared to influenza A. *BMJ Open* 2012; **2**(2).
17. Langenegger E, Coetzee A, Jacobs S, le Roux A, Theron G. Severe acute respiratory infection with influenza A (H1N1) during pregnancy. *Samj, S* 2009; **Suid-Afrikaanse Tydskrif Vir Geneeskunde**. **99**(10): 713-4.
18. Radzikowski A, Dembinski L, Talarek E, Smalisz-Skrzypczyk K, Jackowska T, Marczyńska M. Pandemic A (H1N1) influenza in hospitalized children in Warsaw, Poland. *Pediatric Infectious Disease Journal* 2011; **30** (1): 90.
19. Amayiri N, Madanat F. Retrospective analysis of pediatric cancer patients diagnosed with the pandemic H1N1 influenza infection. *Pediatric Blood & Cancer* 2011; **56**(1): 86-9.

20. Dubnov-Raz G, Somech R, Warschawski Y, Eisenberg G, Bujanover Y. Clinical characteristics of children with 2009 pandemic H1N1 influenza virus infections. *Pediatrics International* 2011; **53**(4): 426-30.
21. Keijzers GB, Vossen CNK-L, Zhang P, et al. Predicting influenza A and 2009 H1N1 influenza in patients admitted to hospital with acute respiratory illness. *Emergency Medicine Journal* 2011; **28**(6): 500-6.
22. Metan G, Bozkurt I, Agkus C, et al. Hospitalized pandemic influenza A (H1N1) patients in a university hospital. *Central European Journal of Medicine* 2011; **6**(1): 83-8.
23. Amine IL, Bajjou T, El Rhaffouli H, et al. Pandemic influenza A(H1N1) 2009 in Morocco: experience of the Mohammed V Military Teaching Hospital, Rabat, 12 June to 24 December 2009. *Eurosurveillance* 2011; **16**(23): 15-20.
24. Fuhrman C, Bonmarin I, Bitar D, et al. Adult intensive-care patients with 2009 pandemic influenza A(H1N1) infection. *Epidemiol Infect* 2011; **139**(8): 1202-9.
25. Fuhrman C, Bonmarin I, Paty AC, et al. Severe hospitalised 2009 pandemic influenza A(H1N1) cases in France, 1 July-15 November 2009. *Euro Surveillance: Bulletin Europeen sur les Maladies Transmissibles = European Communicable Disease Bulletin* 2010; **15**(2): 14.
26. Viasus D, Pano-Pardo JR, Pachon J, et al. Factors associated with severe disease in hospitalized adults with pandemic (H1N1) 2009 in Spain. *Clinical Microbiology and Infection* 2011; **17**(5): 738-46.
27. Viasus D, Pano-Pardo JR, Pachon J, et al. Timing of Oseltamivir Administration and Outcomes in Hospitalized Adults with Pandemic 2009 Influenza A (H1N1) Virus Infection. *Chest* 2011.
28. Lee CK, Lee HK, Loh TP, et al. Comparison of pandemic (H1N1) 2009 and seasonal influenza viral loads, Singapore. *Emerging infectious diseases* 2011; **17**(2): 287-91.
29. Bettinger JA, Sauve LJ, Scheifele DW, et al. Pandemic influenza in Canadian children: a summary of hospitalized pediatric cases. *Vaccine* 2010; **28**(18): 3180-4.
30. Tran D, Vaudry W, Moore DL, et al. Comparison of children hospitalized with seasonal versus pandemic influenza A, 2004-2009. *Pediatrics* 2012; **130**(3): 397-406.
31. Denholm JT, Gordon CL, Johnson PD, et al. Hospitalised adult patients with pandemic (H1N1) 2009 influenza in Melbourne, Australia. *Medical Journal of Australia* 2010; **192**(2): 84.
32. To KKW, Wong SSY, Li IWS, et al. Concurrent comparison of epidemiology, clinical presentation and outcome between adult patients suffering from the pandemic influenza A (H1N1) 2009 virus and the seasonal influenza A virus infection. *Postgraduate Medical Journal* 2010; **86**(1019): 515-21.
33. Giannella M, Alonso M, de Viedma DG, et al. Prolonged viral shedding in pandemic influenza A(H1N1): clinical significance and viral load analysis in hospitalized patients. *Clinical Microbiology and Infection* 2011; **17**(8): 1160-5.
34. Echavarría M, Querci M, Marcone D, et al. Pandemic (H1N1) 2009 cases, Buenos Aires, Argentina. *Emerging infectious diseases* 2010; **16**(2): 311.
35. Yates L, Pierce M, Stephens S, et al. Influenza A/H1N1v in pregnancy: an investigation of the characteristics and management of affected women and the relationship to pregnancy outcomes for mother and infant. *Health Technol Assess* 2010; **14**(34): 109-82.
36. Pierce M, Kurinczuk JJ, Spark P, Brocklehurst P, Knight M, Ukoss. Perinatal outcomes after maternal 2009/H1N1 infection: national cohort study. *Bmj* 2011; **342**: d3214.
37. Bassetti M, Parisini A, Calzi A, et al. Risk factors for severe complications of the novel influenza A (H1N1): analysis of patients hospitalized in Italy. *Clinical Microbiology and Infection* 2011; **17**(2): 247-50.
38. Ozkan M, Tuygun N, Erkek N, Aksoy A, Yıldız YT. Neurologic manifestations of novel influenza A (H1N1) virus infection in childhood. *Pediatric neurology* 2011; **45**(2): 72-6.
39. Hiba V, Chowdhury M, Levi-Vinograd I, Rubinovitch B, Leibovici L, Paul M. Benefit of early treatment with oseltamivir in hospitalized patients with documented 2009 influenza A (H1N1): retrospective cohort study. *Journal of antimicrobial chemotherapy* 2011; **66**(5): 1150-5.

40. Jimenez MF, El Beitune P, Salcedo MP, Von Ameln AV, Mastalir FP, Braun LD. Outcomes for pregnant women infected with the influenza A (H1N1) virus during the 2009 pandemic in Porto Alegre, Brazil. *Int J Gynaecol Obstet* 2010; **111**(3): 217-9.
41. Gérardin P, El Amrani R, Cyrille B, et al. Low clinical burden of 2009 pandemic influenza A (H1N1) infection during pregnancy on the island of La Reunion. *PloS one* 2010; **5**(5): e10896.
42. Zarogoulidis P, Kouliatsis G, Papanas N, et al. Long-Term Respiratory Follow-up of H1N1 Infection. *Viral J* 2011; **8**(1): 319.
43. Duarte PAD, Venazzi A, Youssef NCM, et al. Outcome of influenza A (H1N1) patients admitted to intensive care units in the Paraná state, Brazil. *Rev Bras Ter Intensiva* 2009; **21**(3): 231-6.
44. Yokota RT, Skalinski LM, Igansi CN, et al. Risk factors for death from pandemic (H1N1) 2009, southern Brazil. *Emerging infectious diseases* 2011; **17**(8): 1467.
45. Linko R, Pettilä V, Ruokonen E, et al. Corticosteroid therapy in intensive care unit patients with PCR-confirmed influenza A(H1N1) infection in Finland. *Acta Anaesthesiologica Scandinavica* 2011; **55**(8): 971-9.
46. Bagdure D, Curtis DJ, Dobyys E, Glodé MP, Dominguez SR. Hospitalized children with 2009 pandemic influenza A (H1N1): comparison to seasonal influenza and risk factors for admission to the ICU. *PloS one* 2010; **5**(12): e15173.
47. Torun SH, Somer A, Salman N, et al. Clinical and epidemiological characteristics of pandemic influenza A/(H1N1) in hospitalized pediatric patients at a university hospital, Istanbul, Turkey. *Journal of tropical pediatrics* 2011; **57**(3): 213-6.
48. Fanella ST, Pinto MA, Bridger NA, et al. Pandemic (H1N1) 2009 influenza in hospitalized children in Manitoba: nosocomial transmission and lessons learned from the first wave. *Infection Control and Hospital Epidemiology* 2011; **32**(5): 435-43.
49. Gubbels S, Perner A, Valentiner-Branth P, Molbak K. National surveillance of pandemic influenza A (H1N1) infection-related admissions to intensive care units during the 2009-10 winter peak in Denmark: two complementary approaches. *Euro Surveill* 2010; **15**: 49.
50. Al-Khuwaitir TS, Al-Abdulkarim AS, Abba AA, et al. H1N1 influenza A. Preliminary evaluation in hospitalized patients in a secondary care facility in Saudi Arabia. *Saudi Med J* 2009; **30**(12): 1532-6.
51. Kudo K, Takasaki J, Manabe T, et al. Systemic Corticosteroids and Early Administration of Antiviral Agents for Pneumonia with Acute Wheezing due to Influenza A (H1N1) pdm09 in Japan. *PloS one* 2012; **7**(2): e32280.
52. Chowell G, Viboud C, Simonsen L, et al. Impact of antiviral treatment and hospital admission delay on risk of death associated with 2009 A/H1N1 pandemic influenza in Mexico. *BMC Infectious Diseases* 2012; **12**(1): 97.
53. Cui W, Zhao H, Lu X, et al. Factors associated with death in hospitalized pneumonia patients with 2009 H1N1 influenza in Shenyang, China. *BMC Infectious Diseases* 2010; **10**(1): 145.
54. Čeljuska-Tošev E, Kuzman I, Draženović V, Knezović I, Čivljak R. Clinical and epidemiological characteristics of hospitalized patients with pandemic A (H1N1) 2009 influenza. *Infektološki Glasnik* 2010; **30**(4): 149-59.
55. Myles PR, Semple MG, Lim WS, et al. Predictors of clinical outcome in a national hospitalised cohort across both waves of the influenza A/H1N1 pandemic 2009-2010 in the UK. *Thorax* 2012.
56. Pecavar B, Nadrah K, Papst L, et al. Clinical characteristics of adult patients with influenza-like illness hospitalized in general ward during Influenza A H1N1 pandemic 2009/2010. *Wien Klin Wochenschr* 2011; **123**(21-22): 662-7.
57. Mikic D, Nozic D, Kojic M, et al. Clinical manifestations, therapy and outcome of pandemic influenza A (H1N1) 2009 in hospitalized patients. *Vojnosanit Pregl* 2011; **68**(3): 248-56.
58. Yeung JH, Bailey M, Perkins GD, Smith FG. Presentation and management of critically ill patients with influenza A (H1N1): a UK perspective. *Crit Care* 2009; **13**(6): 426; author reply
59. Libster R, Bugna J, Coviello S, et al. Pediatric hospitalizations associated with 2009 pandemic influenza A (H1N1) in Argentina. *New England Journal of Medicine* 2010; **362**(1): 45-55.

60. Poepl W, Hell M, Herkner H, et al. Clinical aspects of 2009 pandemic influenza A (H1N1) virus infection in Austria. *Infection* 2011; **39**: 341-52.
61. Moghadami M, Kazeroni PA, Honarvar B, et al. Influenza a (H1N1) virus pandemic in fars province: A report from Southern Iran, July-December 2009. *Iranian Red Crescent Medical Journal* 2010; **12 (3)**: 231-8.
62. Boxhammer S, Lepler R, Lenhartz H, Pust B, Hoyer PH. Pandemic influenza A/H1N1-2009 in children and adolescents in Hamburg: Symptoms and course of disease in 95 hospitalized pediatric patients. *Monatsschr Kinderheilkd* 2011; **159**: 560-4.
63. Khandaker G, Rashid H, Zurynski Y, et al. Nosocomial vs community-acquired pandemic influenza A (H1N1) 2009: A nested case-control study. *Journal of Hospital Infection* 2012; **82(2)**: 94-100.
64. Islam QT, Kahhar A, Arif SM, et al. Experience of pandemic influenza a (H1N1) 2009 at Dhaka Medical College Hospital. *Journal of Medicine* 2010; **11 (2)**: 119-23.
65. Rice TW, Rubinson L, Uyeki TM, et al. Critical illness from 2009 pandemic influenza A virus and bacterial coinfection in the United States. *Critical Care Medicine* 2012; **40(5)**: 1487-98.
66. Randolph AG, Vaughn F, Sullivan R, et al. Critically ill children during the 2009-2010 influenza pandemic in the United States. *Pediatrics* 2011; **128(6)**: e1450-8.
67. Herberg JA, Jones KDJ, Paulus S, et al. Comparison of pandemic and seasonal influenza reveals higher mortality and increased prevalence of shock in children with severe H1N1/09 infection. *Pediatric Infectious Disease Journal* 2011; **30 (5)**: 438-40.
68. Mohn KG-I, Lærum BN, Skrede S, et al. Reduced Hospital Stay in Influenza Patients after Mass Vaccination during the 2009 Influenza Pandemic in Norway. *Journal of Vaccines Vaccination* 2013; **4**: 197.

Supplementary Appendix 7: Comparison of hospitalised patients included in analysis compared with excluded patients

Variable	All hospitalised patients included in analysis (NAI treatment known) n/N (%)	All hospitalised patients excluded from analysis (NAI status unknown) n/N (%)	P value
Number of patients, n=32,818	29,234 (89.1)	3,584 (10.9)	
Number of male cases, n=32,808	14,431 (49.4)	1,704 (47.6)	0.082
Age: median (IQR) in years, n=32, 586 Mean (SD)	26 (11 - 44) 28.6 (20.7)	30 (10 – 50) 32.0 (23.9)	<0.001
Population groups (no. of persons)			
Adults (≥16 years)	19,816 (67.8)	2461 (68.7)	0.170
Children (<16 years)	9,218 (31.5)	1091 (30.4)	
Obese* n=25,992	2,607 (9)	154 (4)	<0.001
Smoking, n=21,991	2,406 (8.2)	67 (1.9)	<0.001
Pregnant women **, n=8,041	2,166 (22.8)	84 (7.8)	<0.001
WHO Regions, n=32,818			<0.001
African region	41(0.1)	1 (0.03)	
Region of the Americas	14,186 (48.5)	2,894 (80.8)	
Eastern Mediterranean Region	5,262 (18.0)	20 (0.6)	
European Region	7,272 (24.9)	583 (16.3)	
South-East Asia Region	210 (0.7)	6 (0.2)	
Western Pacific Region	2,263 (7.7)	80 (2.2)	
A(H1N1)pdm09 diagnosis, n=32,818			
Laboratory confirmed	25,001 (85.5)	1758 (49.1)	<0.001
Clinically diagnosed	4,233 (14.5)	1,826 (50.9)	
Comorbidities			
Any comorbidity, n=32,243	11,011(37.7)	952 (26.6)	<0.001
Asthma, n=23,965	2,820 (9.7)	135 (3.8)	
COPD, n=19,907	1,012 (3.5)	57 (1.6)	
Other chronic lung disease, n=18,544	2,479 (8.5)	177 (4.9)	
Heart disease, n=19, 087	1,624 (5.6)	30 (0.8)	
Renal disease, n=20,514	710 (2.4)	19 (0.5)	
Liver disease, n=12,346	295 (1.0)	0	
Cerebrovascular disease, n=10,327	304 (1.0)	6 (0.2)	
Neurological disease, n=13,718	1,013 (3.5)	5 (0.1)	
Diabetes , n=28,217	2,087 (7.1)	149 (4.2)	
Immunosuppression, n=28,775	1,803 (6.2)	116 (3.2)	
Pandemic H1N1 vaccination, n=4,443	347 (7.9)	3 (0.1)	<0.001
Time from symptom onset to hospital admission, days, n=27,060			
Median (IQR),	2 (1 - 5)	2 (1-5)	
Mean (SD)	3.25 (5.15)	3.61 (6.02)	0.0002

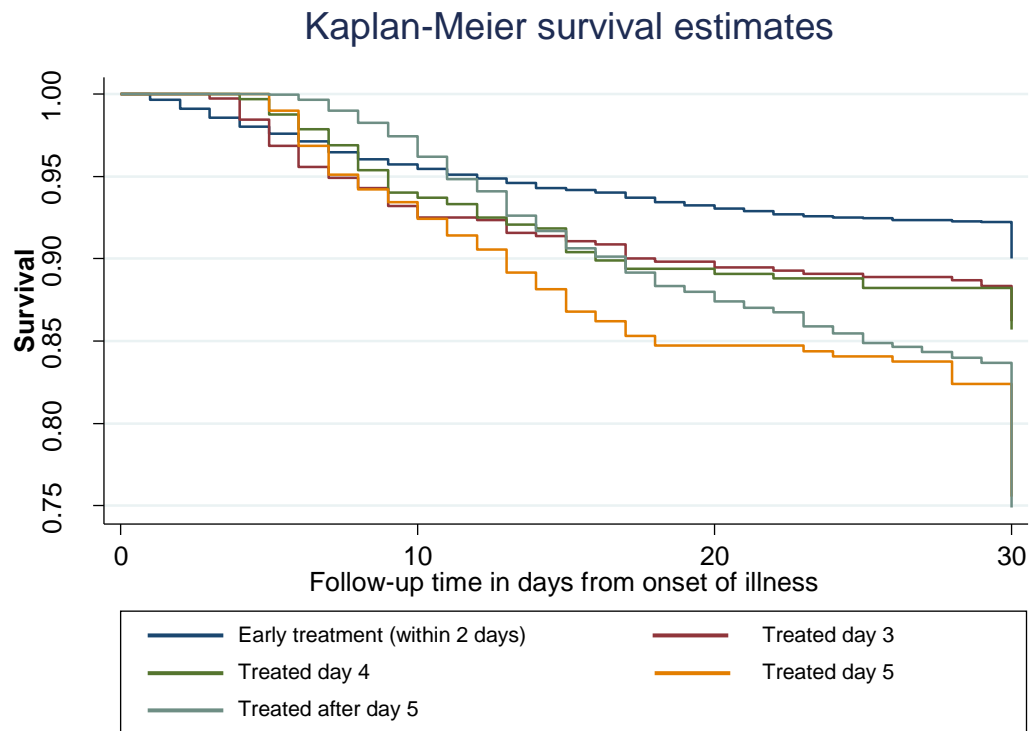
Variable	All hospitalised patients included in analysis (NAI treatment known) n/N (%)	All hospitalised patients excluded from analysis (NAI status unknown) n/N (%)	P value
Other in-hospital treatment			
Antibiotics, n=20, 613	13,230 (45.3)	228 (6.4)	<0.001
Corticosteroids, n=10,006	2,745 (9.4)	6 (0.2)	<0.001
Hospital length of stay, days, median (IQR), n=24,468	5 (2 - 9)	3 (1-8)	<0.001
Outcomes			
Influenza-related pneumonia, n=17,190	7,225 (24.7)	75 (2.1)	<0.001
Admission to critical care, n=27,966	6,848 (23.4)	652 (18.2)	<0.001
Mortality, n=32,818	2,784 (9.5)	235 (6.6)	<0.001

Supplementary Appendix 8: Table summarising the laboratory confirmed or clinically diagnosed results for children <1 and <5 (all exposures)

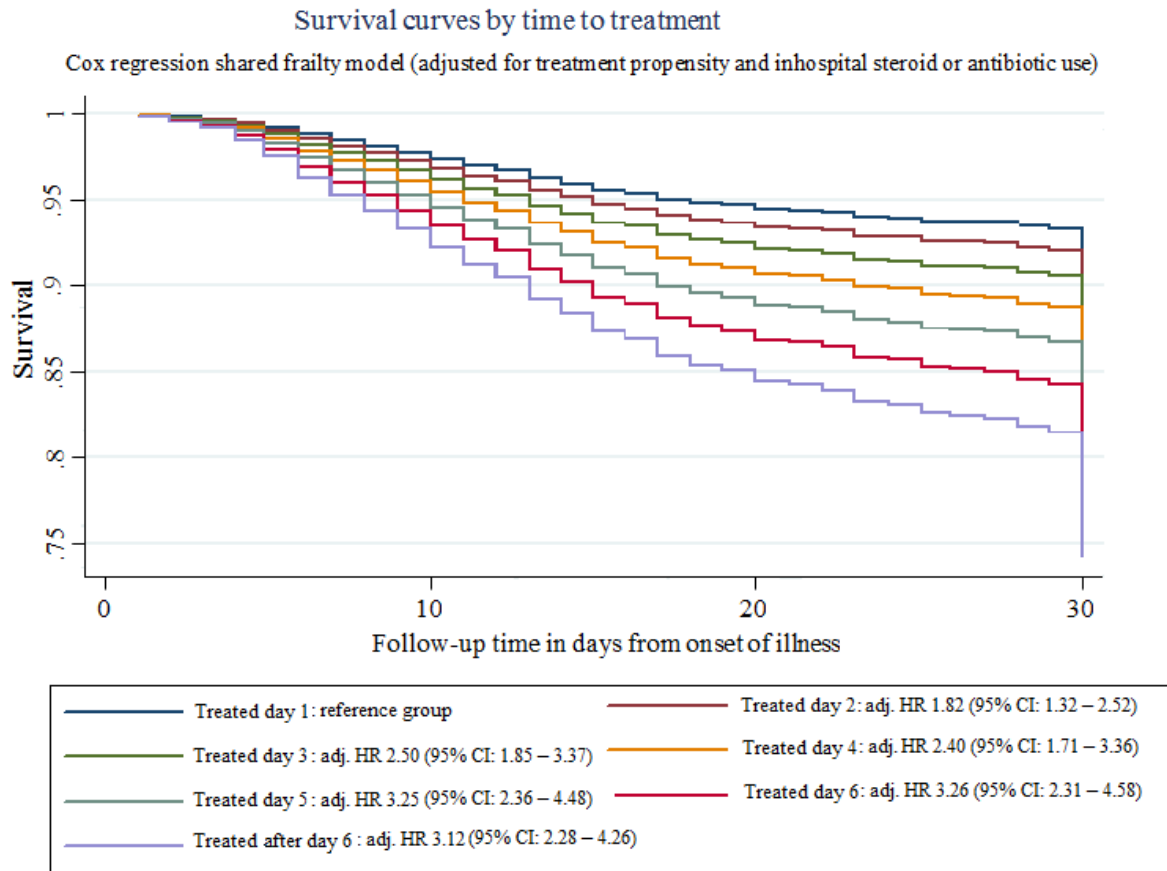
Treatment Exposure	Children <=1 year old		children <=5 years	
	Adjusted† OR (95% CI)	P value	Adjusted † OR (95% CI)	P value
NAI treatment vs. No NAI treatment	1.03 (0.56 to 1.89)	0.932	1.05 (0.66 to 1.68)	0.832
ET (≤ 2 days) vs. LT (> 2 days)	0.77 (0.28 to 2.11)	0.613	1.01 (0.54 to 1.90)	0.969
ET (≤ 2 days) vs. No NAI treatment	1.12 (0.35 to 3.55)	0.849	1.20 (0.58 to 2.49)	0.623
LT (> 2 days) vs. No NAI treatment	1.73 (0.78 to 3.83)	0.179	1.38 (0.62 to 3.11)	0.432

†adjusted for treatment propensity (by quintile), corticosteroid use and antibiotic use

Supplementary Appendix 9: Unadjusted Kaplan-Meier survival curves by time to treatment initiation (up to 5 days and after)



Supplementary Appendix 10: Adjusted survival curves by time to treatment initiation (up to 6 days and after)



Supplementary Appendix 11: Total population at risk, number of deaths and patients lost to follow-up over the study period for the survival analysis

Time Interval (days)	Total population at risk	Events (deaths)	Losses (loss to follow-up)
0-7	25421	545	6809
7-14	18067	697	5641
14-21	11729	345	1609
21-28	9775	144	609
28-30	9022	35	95
30	8892	428	8464

Supplementary Appendix 12: Characteristics of pooled dataset of 9,218 paediatric patients (<16 years) hospitalised with A(H1N1)pdm09 virus infection included in mortality analysis

Characteristic (denominator)	All hospitalised patients n (%)	Deceased n (%)	Survived n (%)
Number of patients ^a	9,218 (100.0)	325 (3.5)	8,893 (96.5)
Number of male cases (n=9,215) ^b	5,199 (56.4)	147 (45.2)	5,052 (56.8)
Age: median (IQR) in years (n=9,218) ^b	5 (1 - 10)	5 (1 - 10)	5 (1 - 10)
Pregnant ‡ (n=307) ^b	33 (5.7)	1 (3.6)	32 (5.8)
WHO Regions (n=9,218) ^b			
African region	9 (0.1)	0 (0)	9 (0.1)
Region of the Americas	4,940 (53.6)	225 (69.2)	4,715 (53.0)
Eastern Mediterranean Region	1,885 (20.5)	48 (14.8)	1,837 (20.7)
European Region	1,426 (15.5)	44 (13.5)	1,382 (15.5)
South-East Asia Region	46 (0.5)	1 (0.3)	45 (0.5)
Western Pacific Region	912 (9.9)	7 (2.2)	905 (10.2)
A(H1N1)pdm09 diagnosis (n=9,218) ^b			
Laboratory confirmed	7,946 (86.2)	298 (91.7)	7,648 (86.0)
Clinically diagnosed	1,272 (13.8)	27 (8.3)	1,245 (14.0)
Comorbidities§ ^b			
Any comorbidity (n=9,066)	2,946 (32.0)	165 (50.2)	2,781 (31.3)
Asthma (n=6,304)	988 (10.7)	27 (8.3)	961 (10.8)
Other chronic lung disease (n=6,268)	786 (8.5)	47 (14.5)	739 (8.3)
Heart disease (n= 5,676)	267 (2.9)	24(7.4)	243 (2.7)
Renal disease (n= 6,349)	112 (1.2)	11 (3.4)	101(1.1)
Liver disease (n= 4,025)	40 (0.4)	3 (0.9)	37 (0.4)
Cerebrovascular disease (n= 3,151)	21 (0.2)	2 (0.6)	19 (0.2)
Neurological disease (n= 4,855)	571 (6.2)	61 (18.2)	510 (5.7)
Diabetes (n= 7,468)	84 (0.9)	8 (2.5)	76 (0.9)
Immunosuppression (n= 8,256)	430 (4.7)	30 (9.2)	400 (4.5)
Pandemic H1N1 vaccination (n= 1,538) ^{b¶}	157 (3.5)	7 (4.1)	150 (3.1)
Time from symptom onset to hospital admission, days, median (IQR) (n= 7570) ^b	2 (1 - 4)	3 (1 - 5)	2 (1 - 4)
Antiviral agents used			
No NAI treatment	3,540 (38.4)	122 (37.54)	3,418 (38.4)
Treated with any NAI	5,678 (61.6)	203 (62.5)	5,475 (61.6)
Treated with oral oseltamivir (n=5,678) ^{bc}	5,316 (93.6)	188 (92.6)	5,128 (93.7)
Treated with intravenous/inhaled zanamivir (n=5,678) ^{bc}	78 (2)	2 (1.0)	76 (1.4)
Treated with intravenous peramivir (n=5,678) ^{bc}	22 (0.4)	11 (5.4)	11 (0.2)
Treated with NAI (regimen unknown) (n= 5,678) ^{bc}	309 (5.4)	13 (6.4)	296 (5.4)
Treated with both NAI and Non-NAI (n=1,312) ^{bc}	31 (2.4)	2 (2.9)	29 (2.3)
Treated with NAI combination therapy (n= 5,678) ^{bc}	47 (0.8)	11 (5.4)	36 (0.7)
Early NAI (≤2 days of symptom onset) (n= 3,899) ^{bc}	2,155 (23.4)	50 (15.4)	2,105 (23.7)
Later NAI (>2 days after symptom onset) (n= 3,899) ^{bc}	1,744 (18.9)	67 (20.6)	1,677 (18.9)
Time from symptom onset to antiviral treatment, days, median (IQR) (n= 3,629) ^b	2 (1 - 4)	3 (1 - 6)	2 (1 - 4)
Other in-hospital treatment^b			
Antibiotics (n=6,381)	4,165 (45.2)	119 (36.6)	4,046 (45.5)
Corticosteroids (n= 3,052)	825 (9.0)	69 (21.2)	756 (8.5)
Hospital length of stay, days, median (IQR) (n=6,753) ^b	4 (2 - 7)	7 (2 - 14)	4 (2 - 7)
Other patient outcomes^b			
Influenza-related pneumonia¥ (n=5,532)	1,851 (20.1)	108 (33.2)	1,743 (19.6)
Admission to critical care (n=7,632)	1,725 (18.7)	234 (72.0)	1,491 (16.8)

Table legend:

^a All percentages have been calculated using these denominators unless otherwise specified

^b Missing data present; 'n' indicates number of cases with data

^c Percentages calculated as a proportion of the sample receiving NAI therapy

[†] Reported as clinically obese or using WHO definition for obesity (BMI ≥ 30 in adults aged ≥ 20 years)

‡ Proportions were calculated as a percentage of pregnant patients among female patients of reproductive age (13 to 54), n=580; the broader age range was selected in preference to the WHO definition (15-44 years) after consultation with data contributors to reflect the actual fertility experience of the sample.

§ For definition of comorbidity, see Supplementary appendix 3

¶ Denominators for pandemic vaccine based on patients admitted after October 1st 2009 (when vaccine potentially available): total: 4,989; deceased: 170; survived: 4,819

‡ Clinically or radiologically diagnosed pneumonia